



International Federation of Surveyors
Fédération Internationale des Géomètres
Internationale Vereinigung der Vermessungsingenieure

ANNUAL REVIEW 2000



FIG Working Week in historical Prague



The FIG fanfare, composed by Czech composer Jiri Simek, was performed by the Brass Ensemble of the Czech Philharmonic at the opening ceremony.



The opening ceremony of the FIG Working Week 2001 was held at the Bethlehem Chapel, the Ceremonial Hall of the Czech Technical University in the historic centre of Prague.



The mayor of Prague, together with Vice President Jerome and Mrs. Nancy Ives. The City of Prague hosted a reception to the head of delegations in the Old Town of Prague behind the famous clock tower.

The FIG working week and 23rd General Assembly took place in Prague, Czech Republic 22–26 May 2000. 42 member associations attended the first meeting and 46 member associations the second meeting, which is among the highest figures in the FIG history outside the congresses. The seminar *Quo Vadis* and the General Assembly were arranged at the National House of Vinohrady. The recently renovated house from the 1890s offered good facilities both for the meetings and the technical exhibition. The opening ceremony was held at the *Bethlehem Chapel* in the old town of Prague. Prague offered unique historical surroundings for social events and technical tours, as well. The conference attracted more than 330 delegates from 47 countries.

The General Assembly, chaired by Vice President **Jerome C. Ives**, was the first under the US Bureau that took over the administration of FIG in November 1999.

The General Assembly adopted the FIG work plan for 2000–2003. The focus of the work plan is in activating member associations, supporting commission activities, continuing co-operation with the UN agencies and expanding the membership especially in Latin and South America. One of the main tasks will be to implement the new governance structure of the Federation.

The General Assembly approved the principles of the new governance structure for the Federation. This includes that the Bureau will be replaced by a Council that shall consist of a President and five Vice Presidents already in the beginning of 2001. The new structure will be taken in full operation 1.1.2007.

The General Assembly further decided to establish two new Task forces: one to review the Commission, Task force and Permanent Institution structure and the other one on Cultures and Languages in FIG.

The General Assembly further adopted the Bathurst Declaration on Land Administration for Sustainable Development and endorsed its recommendations and the recommendations on the development of the FIG relationship to the United Nations. In addition, the new Memorandum of Understanding between UNCHS (Habitat) and FIG was ratified.

Review on the FIG activities in 2000

By Robert W. Foster, President of the International Federation of Surveyors

Year 2000 was a turning point in the history of the International Federation of Surveyors, FIG. The General Assembly decided in Prague, Czech Republic, on the principles of the new governance model of the Federation. The main issue in this process will be a democratic and fully elected Council with a continuity in administration and policies. This work was then followed by preparations of the detailed statutes and internal rules both by the Task Force on the Future Governance of FIG and by the Bureau in discussions with member associations. The decision of the General Assembly is a natural result in completing the long process that started with the establishment of the permanent office in Copenhagen in the beginning of 1999. The endorsement of the new statutes will take place in Seoul in May 2001.

Much work, however, is required before the new governance model is in full operation by January 2007. After adoption of the new governance model the structure of the commissions and permanent institutions still needs discussion. The Bureau is convinced that the new governance model will support the multicultural approach in the administration of the Federation.

The highlights of the past year have been, in addition to the highly successful working week in Prague, the increased number of regional joint commission events that show the way to regional activities within FIG.



“Year 2000 was a turning point in the history of FIG.”

Work Plan 2000–2003

The past year was the first for implementation of the current FIG work plan adopted by the General Assembly in Prague.

The Bureau has identified more than 40 specific goals to implement the theme of the current Bureau “Advancing the Global Role of Surveying”. The work plan recognizes that the member organizations are the heart of FIG. A major focus of the plan is to be implementing mechanisms for increasing participation by member organizations in FIG activities, and informing the member organizations of FIG and other international surveying activities.

Another major objective of our term of office involves the financial condition of FIG. Now that FIG has been established as a legal entity it is no longer necessary to close the financial books at the end of every Bureau, only to begin the next Bureau with no available funds. We have identified as specific tasks to develop a long-term financial strategy for FIG, and to initiate and fund a reserve account. The future vitality of FIG depends on a sound financial footing; it is the intention of this Bureau to achieve that condition and we are making good progress toward this objective.

A third major objective of the 2000–2003 Work Plan is to increase membership within under-represented regions; especially the Caribbean and Central and South America. It is also our intention to increase corporate membership.

The Bureau has begun implementation of its work plan – with the help of member associations and the ten technical commissions.

“FIG has identified more than 40 specific goals to implement the theme of ‘Advancing the Global Role of Surveying’ – the work plan recognizes that the member organizations are the heart of FIG.”



The Bureau had its meeting in Providence in December 2000. Vice Presidents Charles Challstrom and Jerome Ives and Deputy Congress Director John Hohol discussing the future strategies of the Federation.



Dr. Klaus Töpfer and Markku Villikka signed a new MoU between Habitat and FIG during the First Prep. Com of Istanbul+5 in Nairobi.

ferences has been valuable and much appreciated by those organizations.

During 2000 FIG participated the 1st Preparatory Committee for the UN General Assembly on the Overall Review and Appraisal of the Habitat Agenda (Istanbul+5)

United Nations relations

FIG has for several years had close co-operation with the United Nations and several of its agencies, especially UNCHS (Habitat), FAO and Commission on Sustainable Development. The participation of FIG representatives to the UN Regional Cartographic Conference

in Nairobi in May 2000. FIG was further invited to participate in the Urban 21 Conference in Berlin last July and the Experts Group meeting in Västerås, Sweden in November 2000 to prepare the draft Declaration on "Cities and other Human Settlements in the new Millennium" and review the implementation of the Habitat Agenda for the UN Special Session on Istanbul +5.

FIG participated in the UN Regional Cartographic Conferences for Asia and the Pacific in April 2000 in Kuala Lumpur, Malaysia resulting in several new initiatives, e.g., in new events for the Mekong region in February 2003.

FIG was further invited to present the Bathurst Declaration on Land Administration for Sustainable Development at the 8th Session of the Commission on Sustainable Development in New York, April 2000.

"Co-operation between FIG and other surveying organisations has been developed on bilateral basis since IUSM was disbanded in 1999 – first agreements signed with ISM and IAG."

Sister organisations

Co-operation between FIG and the other international professional surveying organisations has been developed on bilateral basis since IUSM was disbanded in 1999. The main goal with bilateral agreements is to create co-operation that is more closely related to commission activities and provides more deliverables.

The first Memorandum of Understanding with sister organisations was signed with the International Society for Mine Surveying (ISM) in Krakow during the ISM Congress in September 2000. A similar Memorandum of Understanding was prepared with the International Association of Geodesy (IAG) for adoption at the General Assembly in Seoul, 2001.

The UNCHS (Habitat) Professionals Forum includes architects, planners and surveyors with the goal to combine several professions to implement the Habitat Agenda. As a result of this co-operation, which was initiated by several associations and UNCHS (Habitat) in 1999, FIG was invited to make a presentation at the Urban 21 Conference in Berlin in July 2000. FIG is also represented in the Steering Committee of the Professionals Forum.

The joint Commissions 2, 3, 5 and 7 Seminar in Malta in September was a new initiative to expand the regional activities of the Federation.

Commission activities

The technical and professional work of the Federation is performed by the ten technical commissions and their activities. The Bureau is pleased with the many activities of the commissions when organizing their own events but especially with the increased number of joint events. Commissions 2, 3, 5 and 7 are examples of commissions that implement not only their own work

plans and policies but also the FIG policy. A good example was the Commission 2 seminar organized in Rosario, Argentina in October representing the Federation and promoting FIG in South America and Latin America. Commission 3 on spatial information management has started its arrangements for organizing, jointly with UNCHS (Habitat) and the Institution of Surveyors of Kenya, a larger conference in Nairobi to be held in October 2001. That will be the biggest FIG commission-driven event ever in Africa. This event is also a good example of the joint commission activities that have increased remarkably over the years. Another good example was the Symposium for the Mediterranean area organized in September 2000 in Malta to which five commissions took part under Commission 5 leadership while The Land Surveyors Society, Malta made the practical arrangements.

The Commissions are also active in organizing their own annual events. Last year Commission 7 on cadastre and land management organized its annual meeting in Hamburg, Germany in May followed by an international



symposium on land markets. Commission 3 organized its annual meeting and seminar attracting about 100 participants to Athens, Greece in October 2000. Both Commissions have also introduced a successful concept on national reports on the commission expertise.

As an example of the many activities of the Commission working groups, the seminars organized by Commission 7 Working Group "Reforming the Cadastre" during the Austrian Geodetic Congress and the 13th International Course on Engineering Surveying (cosponsored by Commissions 5 and 6) in Munich should be mentioned.

FIG further contributed to the national surveying congress in Bogotá, Colombia in November, 2000. The Bureau met during the ACSM national congress in Providence, Rhode Island in the USA in December 2000. The Commission chairs participated in seminars in Sofia, Bulgaria and San Salvador, El Salvador.

In Prague FIG established a new task force to review the role and structure of commissions, task forces and permanent institutions in FIG. The Bureau looks forward to final proposals to encourage the commissions to take an even more active role in implementing the goals of the Federation.



Commission 2 Seminar in Rosario, Argentina, was the first FIG Commission organized event in South America and a good start for the membership expansion in Latin America. FIG representatives Stig Enemark (to left), John Parker and Pedro Cavero at the plenary session.

Task Forces

FIG has been actively involved in international standardization both in ISO but also by preparing the FIG Guide on Standardization. The Task force on under-represented groups in surveying has continued its work publishing a quarterly newsletter.

The Task Force on Mutual Recognition was the subject of a joint expert seminar held in November in Delft on Enhancing Professional Competence of Surveyors in Europe. This seminar was a cooperative effort of FIG and the European surveying association CLGE.

The Task Force on Sustainable Development completed its work at the end of 2000 by publishing the draft "FIG Agenda 21". This is an important contribution from FIG to implement Agenda 21 and the Habitat Agenda in the surveying profession.

A new task force on cultures and languages in FIG was established by the General Assembly in Prague.



The first ever CLGE and FIG Seminar in Delft focused on the enhancing professional competence in Europe.

Membership

The number of member associations was 79 members from 68 countries at the end of 2000. In 2000 an application for membership was accepted from Ordre des Géomètres-Topographes du Liban (Lebanon), Czech Association of Certified Property Appraisers (Ceská společnost certifikovaných odhadcu majetku) (Czech Republic), Ordem dos Engenheiros, Colégio de Engenharia Geografica (Portugal) and Sociedad Colombiana de Topógrafos (Colombia).

In addition Jordan, Guatemala and El Salvador joined as affiliate members. The new affiliate members from Latin America were supported by the US aid project

"Hurricane Mitch Recovery Program". The number of academic members was already 28 at the end of 2000. The number of corporate members was 10 at the end of 2000. The new members that joined during the year were Josef Attenberger GmbH and Terra Map Server GmbH from Germany and Blom ASA from Norway.

Mr. Sarkis Fadous, President of the Ordre de Géomètres-Topographes du Liban, receives the membership certificate from Vice President Jerome Ives.





Prof. Holger Magel receives a check of US\$ 5,000 on behalf of the FIG Education Foundation from Prof. Ian Williamson at the General Assembly in Prague.

FIG Education Foundation

The General Assembly decided to reorganize the Foundation under the FIG umbrella at its meeting in Seoul. This was implemented by moving the former FIG Education Foundation from Australia to Denmark where it is administrated from the FIG office. The new format of the Foundation will offer better opportunities for FIG to serve its members in developing countries with greater efficiency, and to assist young surveyors in those countries.



Director, FIG Office visited the Sociedad Colombiana de Topógrafos at their annual conference in Bogotá in November 2000.



Prof. James P. Reilly, President of the American Congress on Surveying and Mapping ACSM and Robert Foster, President of FIG at the ACSM Annual Conference in Providence, USA in December 2000, where the Bureau discussed among other issues the FIG Congress 2002, Washington, DC.

Visits

The Bureau intends to visit as many member associations as possible during its term of office. It is, however, unable to visit all countries due to a shortened term of office while we convert to the new governance structure.

Before the Prague working week I visited Norway, Finland, Estonia, Sweden, Malaysia and China. Following the working week the Bureau members or FIG representatives have visited members in Argentina, Chile, Colombia, Czech Republic, Denmark, El Salvador, Finland, France, Germany, Greece, Kenya, Korea, Japan, Malta, Morocco, the Netherlands, Poland, Sweden, USA and Venezuela.

As President I helped the Danish Association of Chartered Surveyors, DdL, celebrate their 125th anniversary in Copenhagen in September after which I flew to Krakow, Poland, where I met with the Council of the International Society of Mine Surveying for signing of our new Memorandum of Understanding. I enjoyed taking part in the symposium "The Mediterranean Surveyor in the New Millennium" in Malta that same month. In December the Bureau met in Providence, Rhode Island in the US, where the American Congress on Surveying and Mapping held a joint conference with the American Society for Photogrammetry and Remote Sensing. Later in December the Director, FIG Office and I visited Japan; we were warmly greeted by representatives of the local surveying profession who arranged a tour for us of the Sokkia and Topcon facilities. From there we traveled to Seoul for a review of plans for WW2001.

Information delivery

The FIG office will continue in its Copenhagen office into the foreseeable future. The Bureau will sign a new contract with the Danish Association of Chartered Surveyors, DdL, in Seoul.

The FIG information delivery system is now available to more people than ever. The FIG web site includes relevant information for surveyors and through the web site we can reach people that we may never contact through traditional communication methods. In 2000 the FIG Bulletin was published only once but returns to the quarterly schedule in 2001.

The proceedings from the FIG working week 2000 as well as from the main seminars are available both in electronic format and as hard copies.

Facts about FIG



was founded in Paris in 1878. It is a federation of national associations and is the only international body that represents all surveying disciplines. It is a non-government organisation (NGO) in consultative status with the Economic and Social Council of the United Nations (ECOSOC), The United Nations Centre for Human Settlements (Habitat) and several other UN agencies.

FIG's aim is to ensure that the disciplines of surveying and all who practise them meet the needs of the markets and communities that they serve. FIG realises its aim by promoting the practice of the profession and encouraging the development of professional standards.

Membership

The voting members of FIG are the national associations, which are the leading professional societies of surveyors in their respective countries. The non-voting members are (i) affiliates, groups of surveyors undertaking professional activities but not fulfilling the criteria for member associations, (ii) correspondents, individuals in countries where no association or group of surveyors exists that is eligible to join the Federation as a member association or affiliate, (iii) sponsor members – organisations, institutions or agencies which manufactures or distributes instruments, equipment or supplies or which operate or provide commercial services in support of the profession, (iv) academic members, organisations, institutions or agencies which promote education or research in one or more of the disciplines of surveying, (v) honorary presidents and honorary members – individuals who have made an outstanding contribution to surveying internationally.

Membership statistics at the end of 2000 was:

- 79 member associations in 68 countries
- 5 affiliates
- 16 correspondents
- 10 corporate members
- 28 academic members from 21 countries.

Meetings

FIG holds an annual working week, hosted by one of its member associations. This combines meetings of FIG's administrative bodies (the Bureau, the General Assembly and the Advisory Committee of Commission Officers) with technical seminars organised by the host association and one or more of the technical and scientific commissions. The 2000 working week was held in Prague, Czech Republic 22–26 May. The technical conference included sessions of all ten scientific commissions.

The General Assembly – members of the FIG Bureau, delegates of the member associations and chairs of the commissions – debates and approves policies. Responsibility for policy implementation rests with the Bureau. The Advisory Committee of Commission Officers Committee brings together the officers of the nine commissions and one ad-hoc commission, which together are responsible for leading FIG's technical and scientific work.

Finances

FIG's operating costs are largely financed by subscriptions paid by member associations, affiliates, sponsors and academic members. Rates are approved annually by the General Assembly. The membership fee for member associations was in 2000 Swiss francs 4.75 per member of a member association up to 4,000 members, Swiss francs 250 for an affiliate member and US\$ 150 for an academic member.

Other activities, including technical seminars and administrative meetings, are self-financing.

Bureau administration and permanent office

Each Bureau is provided on a four-year rotational basis from within the member associations. In 1999–2002 the Bureau is based in the USA, with the U.S. member association ACSM providing five of the seven Bureau members (President and three Vice-Presidents and Congress Director). The preceding (UK) and successor (German) administration each provides one Vice-President.

FIG has a permanent office in Copenhagen, headed by a salaried Director.

Future plans

Ensuring that FIG represents all surveying skills and promoting the contribution which these skills make to sustainable economic development underlie much of FIG's current work. More emphasis than hitherto is being placed on valuation, urban management and construction economics. The development of partnerships with UN agencies is helping FIG to make a positive contribute to world wide programmes to implement the United Nations' Global Plan of Action, by showing how the effective management of land, property and construction resources can contribute to sustainable economic development.

FIG is also committed to identifying and helping surveyors world wide to respond to demands for surveying services. In consultation with member associations and commission officers the Bureau is constantly reviewing and rolling forward FIG's strategic plan and plan of work.

Recent FIG Publications

- Hydrography in Ports and Harbours, Publication no. 8, 1994.
- Recommended Procedures for Routine Checks of Electro-Optical Distance Meters (EDM), Publication no. 9, 1994.
- FAO and FIG Future Collaboration in Cadastral Reform in Rural Economics in Transition: report of round table meeting, publication no. 10, 1995.
- The FIG Statement on the Cadastre, Publication no. 11, 1995, available in 13 languages.
- Land Tenure, Land Management and Land Information Systems: report of FIG, FAO and UNCHS round table meetings, Publication no. 13, 1995.
- Working towards Liberalisation in Trade in Services: the applications of NAFTA, the EU and MERCOSUR to the surveying profession, Publication no. 14, 1996.
- Continuing Professional Development, Publication no. 15, 1996.
- Constituting Professional Associations publication no. 16, 1998 and Constitution d'Associations professionnelles, 2000.
- Statement of Ethical Principles and Model Code of Professional Conduct, Publication no. 17, 1998 and Exposé des principes déontologiques et modèle de code de conduite professionnelle, 2001.
- Cadastre 2014. Commission 7 publication, 1998, new edition 2001.
- Quality Assurance in Surveying Education, Publication no. 19, 1999.
- FIG Plan of Work 1999–2003, Publication no. 20, 2000.
- The Bathurst Declaration on Land Administration for Sustainable Development, Publication no. 21, 1999.
- Co-operation between FIG and UN agencies 2000–2003 – Report of the FIG/UN Roundtable Meeting in Melbourne 1999, Publication no. 22, 1999.

FIG Members

MEMBER ASSOCIATIONS

Algeria	Association des Géomètres Algériens	Lebanon	Ordre des Géomètres-Topographes du Liban – Lebanon ^{*)}
Argentina	Federación Argentina de Agrimensores	Lithuania	Lithuanian Association of Property Valuers Lithuanian Association of Surveyors
Australia	The Institution of Surveyors, Australia	Luxembourg	Ordre Luxembourgeois des Géomètres OLG
Austria	Austrian Society for Surveying and Geoinformation	Malaysia	Institution of Surveyors Malaysia
Bahamas	Bahamas Association of Land Surveyors	Malta	Land Surveyors Society
Belarus	Belarus Land Reform Association	Netherlands	Nederlandse Vereniging voor Geodesie
Belgium	Union Belge des Géomètres-Experts Immobiliers	New Zealand	New Zealand Institute of Surveyors
Bulgaria	Union of Surveyors and Land Managers in Bulgaria	Nigeria	Nigerian Institute of Surveyors The Nigerian Institute of Quantity Surveyors NIQS
Canada	Canadian Institute of Geomatics	Norway	Norges Jordskifte kandidatforening NJKF, faglig gruppe af NIF and GeoForum
China	Chinese Society of Geodesy, Photogrammetry and Cartography	Palestinian Authority	Licensed Surveyors Association in Palestine
Colombia	Sociedad Colombiana de Topógrafos ^{*)}	Papua New Guinea	Association of Surveyors of Papua New Guinea
Croatia	Croatian Geodetic Society	Poland	Stowarzyszenie Geodetow Polskich
Cyprus	Association of Rural Surveying Engineers of Cyprus	Portugal	Ordem dos Engenheiros, Colégio de Engenharia Geografica ^{*)}
Czech Republic	Czech Union of Surveyors and Cartographers Czech Association of Certified Property Appraisers ^{*)}	Romania	Union of Romanian Geodesy
Denmark	Danish Association of Chartered Surveyors DdL	Russia	Federal Service of Geodesy and Cartography in Russia
Egypt	Egyptian Committee of Surveying and Mapping	Singapore	Singapore Institute of Surveyors and Valuers
Estonia	Association of Estonian Surveyors EGÜ	Slovak Republic	Slovak Union of Surveyors and Cartographers
Fiji	Fiji Institute of Surveyors	Slovenia	Association of Surveyors of Slovenia
Finland	Finnish Association of Surveyors MIL	South Africa	South African Council for Professional and Technical Surveyors
Former Yugoslav Republic of Macedonia FYROM	Union of Geodesy Societies of FYROM	Spain	Colegio Oficial de Ingenieros Técnicos en Topografía
France	Ordre des Géomètres-Experts OGE Association Française de Topographie AFT	Sri Lanka	Surveyors Institute of Sri Lanka
Germany	Deutscher Verein für Vermessungswesen e.V. DVW	Sweden	Sveriges Lantmätareförening SLF Samfundet för Fastighetsekonomi
Ghana	Ghana Institution of Surveyors	Switzerland	Schweizerischer Verein für Vermessung und Kulturtechnik
Greece	Technical Chamber of Greece Hellenic Association of Rural and Surveying Engineers	Syria	Order of Syrian Engineers and Architects
Hong Kong, China	The Hong Kong Institute of Surveyors	Trinidad and Tobago	Institute of Surveyors of Trinidad and Tobago
Hungary	Magyar Földmérési, Térképészeti és Távérzkézési Társaság	Turkey	Chamber of Surveying Engineers of Turkey
Indonesia	Ikatan Surveyor Indonesia	Ukraine	Ukrainian Society of Surveying
Ireland	The Society of Chartered Surveyors The Irish Institution of Surveyors	United Kingdom	Institution of Civil Engineering Surveyors ICES The Royal Institution of Chartered Surveyors RICS
Israel	Association of Licensed Surveyors in Israel Israel Land Valuers Association	U.S.A.	American Congress on Surveying & Mapping ACSM The Appraisal Institute
Italy	Consiglio Nazionale Geometri	Vietnam	Association of Geodesy, Cartography and Remote Sensing
Jamaica	Land Surveyors Association of Jamaica	Yugoslavia	Union of Surveying Engineers (Serbia and Montenegro)
Japan	Japan Federation of Surveyors JFS	Zambia	Surveyors Institute of Zambia
Kenya	Institution of Surveyors of Kenya	Zimbabwe	Real Estate Institute of Zimbabwe Survey Institute of Zimbabwe
Korea	Korea Confederation of Surveyors		
Latvia	Latvian Association of Surveyors		

(79 members from 68 countries)

AFFILIATES: Chile, Colombia, El Salvador ^{*)}, Guatemala ^{*)}, Jordan ^{*)}

CORRESPONDENTS: Antigua and Barbuda, Bahrain, Belize, Bhutan, Botswana, Burkina Faso, Guyana, India, Lesotho, Madagascar, Mexico, Mongolia, Senegal ^{*)}, Tanzania (Zanzibar), Thailand, Tonga, Tunisia, Tuvalu

ACADEMIC MEMBERS

Argentina Facultad de Ciencias Exactas y Tecnologías / UNSE, Departamento Academico de Agrimensura ^{*)}

Australia The University of Melbourne/Department of Geomatics

Botswana University of Botswana/Department of Civil Engineering

Canada University of New Brunswick/Department of Geodesy and Geomatics Engineering

Chile Universidad de Concepcion, Unidad Académica Los Angeles, Departamento Geomensura ^{*)}

Colombia Universidad Distrital Francisco José de Caldas de Bogotá/Facultad de Ingeniería, Ingeniería Catastral y Geodesia

Denmark Aalborg University, School of Surveying/School of Surveying and Planning

Finland Helsinki University of Technology/Department of Surveying
Espoo-Vantaa Institute of Technology (EVITech) ^{*)}

Germany Technische Universität München/Faculty of Civil Engineering and Surveying
University of Applied Sciences Oldenburg/Ostfriesland/Wilhemshaven, Department of Surveying Engineering ^{*)}

Hong Kong, China The Hong Kong Polytechnic University/Department of Land Surveying & Geo- Informatics

Hungary The University of West Hungary/College of Surveying and Land Management/Department of Geomatics ^{*)}

Ireland Dublin Institute of Technology/Geomatics Unit

Kenya University of Nairobi/Department of Surveying ^{*)}

Norway Agricultural University of Norway/Department of Land Use and Landscape Planning ^{*)}
Agricultural University of Norway/Department of Mapping Sciences ^{*)}

New Zealand University of Otago/Department of Surveying

Romania University "Dunarea de Jos" din Calati/Department of Surveying

Spain Universidad Politécnica de Madrid, Escuela Universitaria de Ingeniería Técnica Topográfica ^{*)}

Sweden Royal Institute of Technology/Real Estate

Turkey Planning and Land Law
Istanbul Technical University, Civil Engineering Faculty, Department of Geodesy and Photogrammetry ^{*)}

United Kingdom Kingston University/Faculty of Design/School of Surveying ^{*)}
Leeds Metropolitan University/School of the Built Environment
Sheffield Hallam University/School of Urban and Regional Studies
University College London/Department of Geomatic Engineering

USA Michigan Technological University/School of Technology/Surveying ^{*)}
New Mexico State University/Surveying Engineering ^{*)}

CORPORATE MEMBERS:

Berntsen International Inc, BLOM ASA^{*)}, GITC Bv, Josef Attenberger GmbH ^{*)}, Kampsax A/S, Leica Geosystems AG, Schonstedt Instrument Company, SOKKIA CO., LTD., Terra Map Server GmbH ^{*)}, Trimble Navigation Ltd

^{*)} Members admitted during 2000.



Carlos Alfredo Rodriguez Rojas, President of the Sociedad Colombiana de Topógrafos with the membership certificate. SCT was one of the four new member associations that joined FIG in 2000.

Key contacts

President

Robert W. Foster
E-mail: rwfoster@juno.com

Vice-presidents

Professor Holger Magel (Germany)
E-mail: magel@landentwicklung-muenchen.de
Jerome C Ives (USA)

E-mail: jerryives@attglobal.net

Dr Tom Kennie (UK)

E-mail: tkennie@ranmore.co.uk

Christian Andreasen

E-mail: andreasn@bellatlantic.net

Charles W. Challstrom

E-mail: Charlie.Challstrom@noaa.gov

Congress Director

Mary G Clawson

E-mail: Mgclaw@aol.com

Director, FIG-UN Liaison

Professor Ian Williamson (Australia)

E-mail: ianpw@unimelb.edu.au

Commission 1 (professional standards and practice)

Chair: Professor John Parker

E-mail park106@attglobal.net

Commission 2 (professional education)

Chair: Professor Kirsi Virrantaus

E-mail Kirsi.Virrantaus@hut.fi

Commission 3 (spatial information management)

Chair: Jes Ryttersgaard

E-mail JR@kms.dk

Commission 4 (hydrography)

Chair: Dennis A St Jacques

E-mail stjacquesd@dfo-mpo.gc.ca

Commission 5 (positioning and measurement)

Chair: Professor Jean-Marie Becker

E-mail jean-marie.becker@lm.se

Commission 6 (engineering surveys)

Chair: Dr Michel Mayoud

E-mail mayoud@cern.ch

Commission 7 (cadastre and land management)

Chair: Dr Paul Munro-Faure

E-mail Paul.MunroFaure@fao.org

Commission 8 (spatial planning and development)

Chair: Helmut Brackmann

E-mail helmut.brackmann@bottrop.de

Commission 9 (valuation and the management of real estate)

Chair: Michael Yovino Young

E-mail myovino-young@yovino.com

Ad hoc commission on construction economics/management

Chair: John Collinge

E-mail jcollinge@mdagroup.com

Task force on under-represented groups in surveying

Chair: Gabriele Dasse

E-mail g.dasse@gmx.de

Task force on standards

Chair: Iain Greenway

E-mail igreenway@compuserve.com

Task force on mutual recognition of qualifications/reciprocity

Chair: Professor Stig Enemark

E-mail enemark@i4.auc.dk

Task force on sustainable development

Chair: Helge Onsrud

E-mail helge.onsrud@statkart.no

Task force on the future governance and management of FIG

Chair: Dr Tom Kennie

E-mail tkennie@ranmore.co.uk

Task force on the review of commission, task force and permanent institution structure 2000-2002

Chair: Dr Tom Kennie

E-mail tkennie@ranmore.co.uk

Task force on cultures and languages in FIG

Co-Chair: Bernard Bour

E-mail: b.bour@wanadoo.fr

Co-Chair: Hagen Graeff

E-mail: hagen.graeff@gv.hamburg.de

Office International du Cadastre et du Régime Foncier (OICRF)

Director: Professor Paul van der Molen

E-mail info@oicrf.org

FIG Multi-Lingual Dictionary Board

c/o Bundesamt für Kartographie und Geodäsie

E-mail wt@leipzig.ifag.de

International Institution for the History of Surveying and Measurement

Director: Jan de Graeve

Secretary James R Smith

E-mail 101765.332@compuserve.com

FIG Foundation

c/o FIG Office

Director: Professor

Holger Magel

E-mail FIG@fig.net

Home page www.fig.net

FIG Office

International Federation of Surveyors

Lindevangs Allé 4

DK-2000 Frederiksberg

Copenhagen, Denmark

E-mail FIG@fig.net

Tel. +45 3886 1081

Fax +45 3886 0252

FIG home page: <http://www.fig.net>

Director: Markku Villikka



Income and expenditure account, 1999 and 2000

	2000	1999
	Swiss francs	Swiss francs
Income		
Subscriptions, member associations	290,743	306,675
Subscriptions, affiliates	1,136	1,600
Subscriptions, sponsor members	38,640	38,250
Subscriptions, academic members	3,978	1,500
Sales of publications	113	742
Interest income	2,678	42
Contributions	0	51,526
Various	13,887	1,972
Total income	351,175	402,307
Expenditure		
Bureau administration	78,378	67,899
Bureau meetings	22,115	50,199
FIG meetings	32,593	59,976
Support to member associations	45,615	49,798
Commission activities	57,428	43,840
Promotion	49,237	49,234
Establishing permanent office	0	21,827
Total expenditure	285,375	342,773
Surplus for the year	65,800	59,534

**Membership subscriptions
by region in 2000**

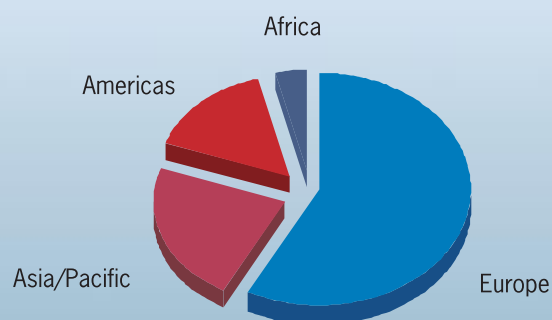
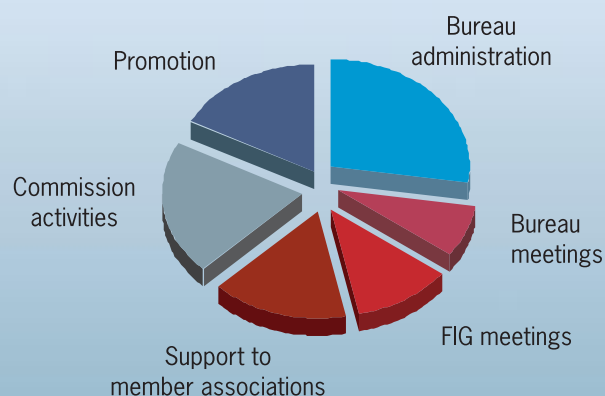


FIG expenditure by activity, 2000





Jes Ryttersgaard, Chair of FIG Commission 3 and Dr. Chryssy Potsiou after the successful Commission Annual Meeting and Seminar in Athens in October 2000.



The Commission officers had their ACCO meeting at the FIG office in Copenhagen in January 2000. The welcome reception was hosted by Den danske Landinspektørforening DdL.



The role of sponsor members was developed towards a corporate membership during the year. FIG met its corporate members both in Prague and at the Intergeo 2000 in Berlin.

FIG CORPORATE MEMBERS 2000

Berntsen

Berntsen International Inc



BLOM ASA

GITC

GITC Bv



Josef Attenberger GmbH

KAMPSAX

Kampsax A/S



Leica Geosystems AG

SCHONSTEDT INSTRUMENT COMPANY

Schonstedt Instrument Company

SOKKIA

Sokkia Co Ltd

TerraMapServer

Terra Map Server GmbH

Trimble

Trimble Navigation Ltd