

Architectural Development in North and South Korea

-

Jong-Ruhl Hahn
UIA Vice President



World Map



Korea Peninsula Map



Current Cityscape of Pyongyang



Jung sung street, Hamhung city (previously called Wilhelm Pieck street)

Current Cityscape of Pyongyang



North Korea's Kim Dynasty



I. North Korea's urban residence in the reign of Kim il sung



II. North Korea's urban residence in the reign of Kim Jong il



- Since the mid-1970s, as power has shifted to Kim Jong il, housing planning and construction methods have changed a lot. Kim Jong il's political ambition played a major role in this.

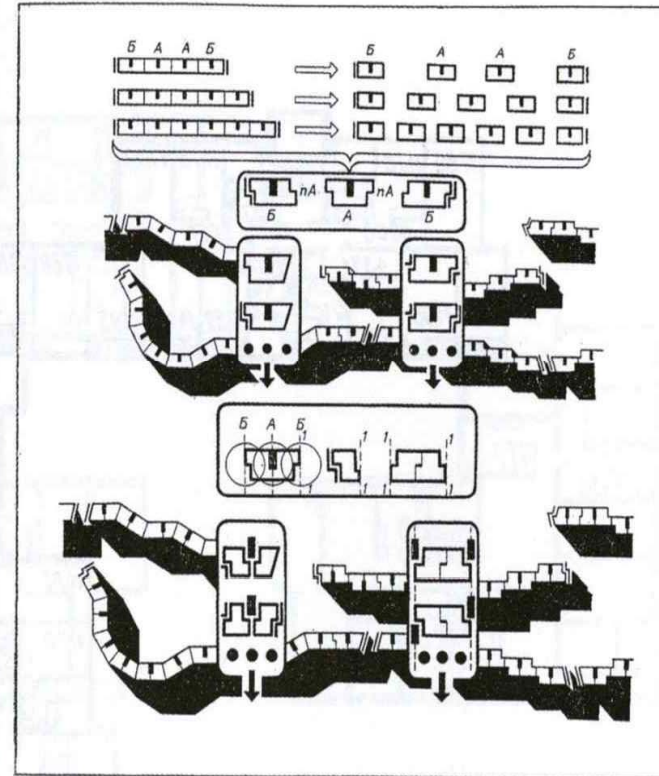
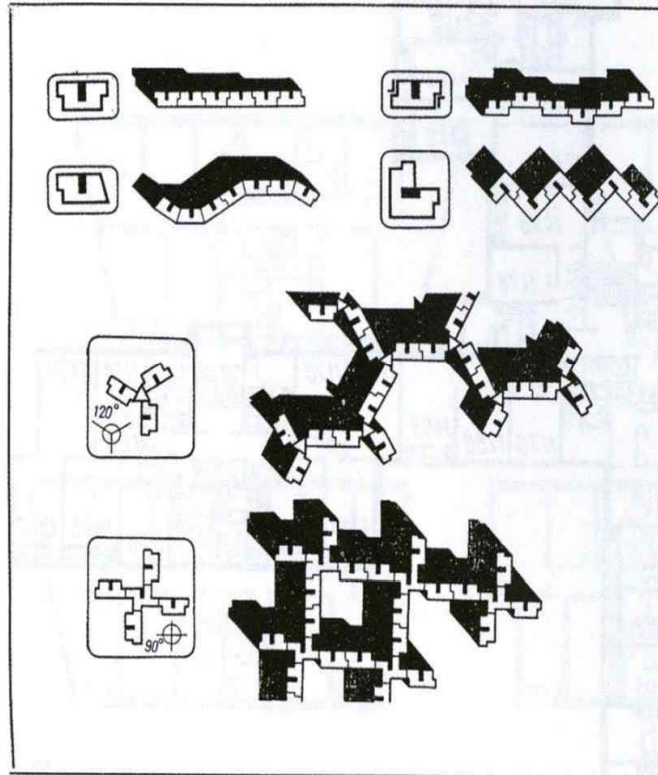


- The construction of a residential complex to Kim Jong-il, who started public activities in the 1970s, was an accomplishment that showed off his qualities as a successor.

1. Formation of the streets



- The most important characteristic of city and complex planning at the reign of kim jong il is the formation of the streets. Not only Pyongyang, but also major cities in the province were planned in a new way.



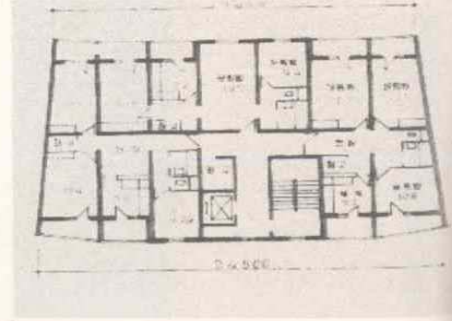
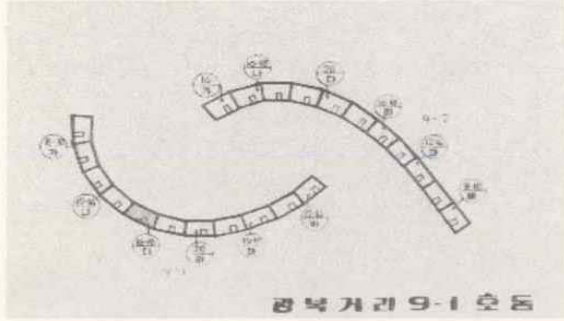
- New approaches to criticism are seen(evident) in the Sosnovaya Polyana residential complex in Leningrad, built since 1971.
- This kind of tendency has been followed by North Korea since the 1970s. similar trends have also been observed in North Korean residential buildings built in the 1980s.
- In order to maintain standardization while maximizing diversity, architects have begun to develop some compromises that combine urban planning and economic convenience.

2. Changes and Influence of Soviet Prefabricated Housing

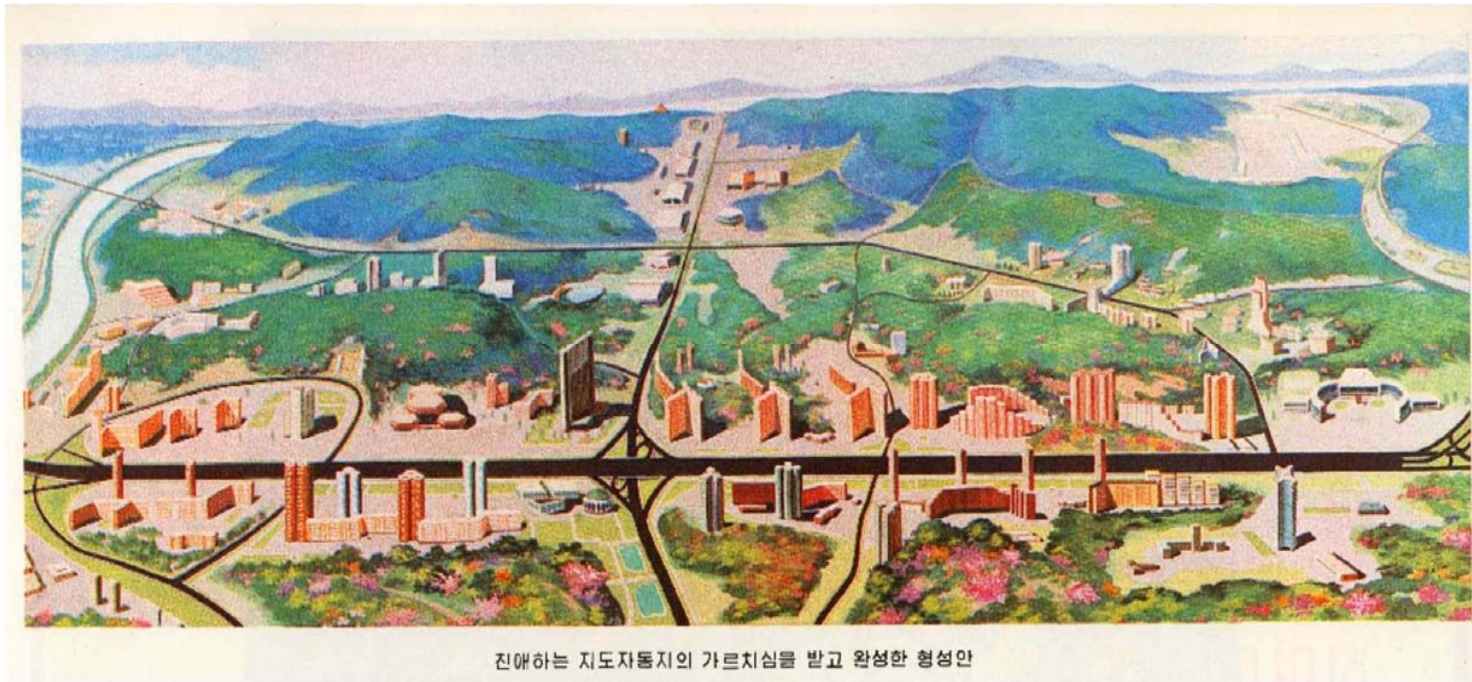




近郊住宅団地立派



단면도



- Gwangbok Street is the biggest change in the layout of Kim Jong il's residential complexes. It was heavily influenced by the Soviet residential complexes mentioned above in the 1970s.
- From this point, the emphasis was on non-repeatability and diversity in the form of buildings rather than increasing the number of floors.

3. Limitations and problems



- What was most important in the Kim Jong il housing plan was not the convenience and economic efficiency of the residents, but the scene composition perceived at a certain point in the city.
- Many of the housing-related problems that are intensifying in North Korean society today originated here.

III. Kim jong un's era after the march of hardship

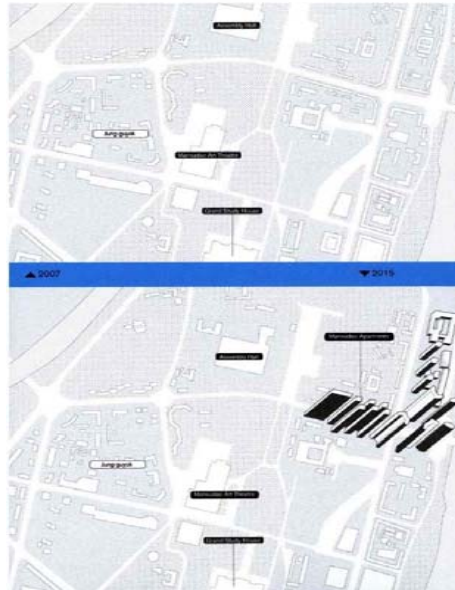
1. Construction and supply by country



Mirae scientists street apartments, Ryomyong street, Kwangbok street apartments

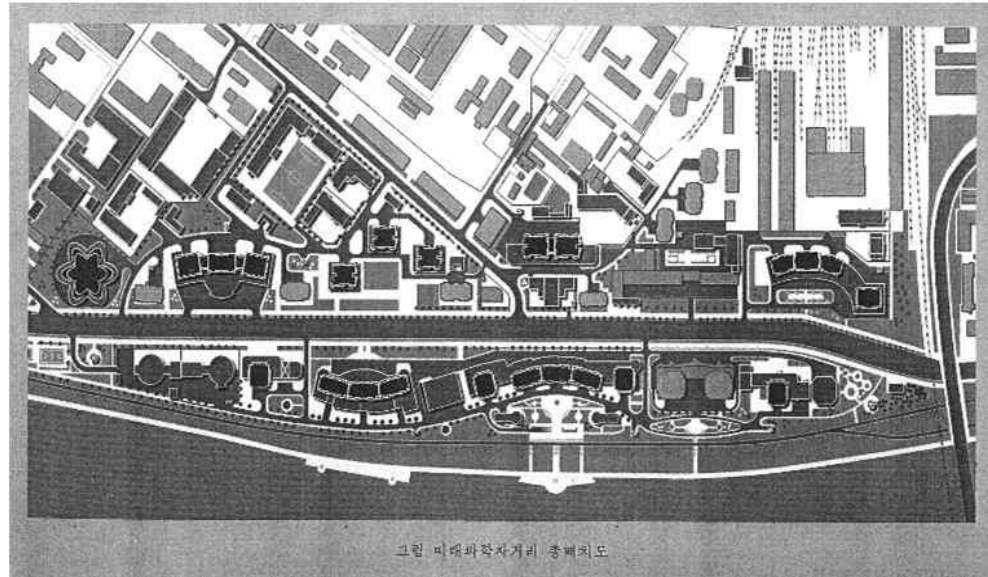
- Construction by the state is generally done on a large scale.
- since these apartments are provided free of charge, they are prohibited from trading.

Case1. - mansudae apartments



- 입주가 한창인 평양 만수대거리 살림집 전경 (사진=조선일보)

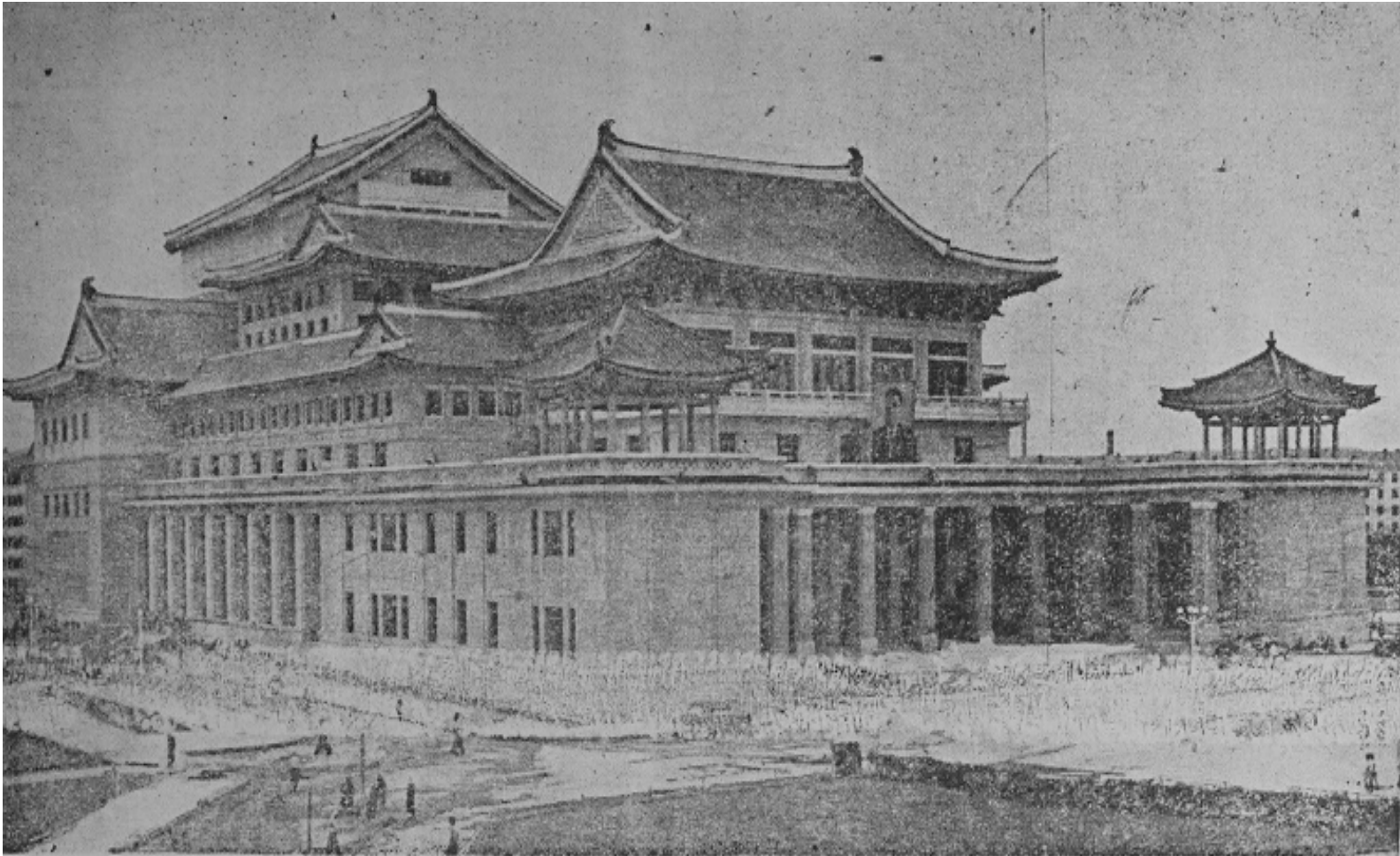
Case2. - Mirae scientists street apartments



IV. Endeavor to collaborate among traditional and modern architecture typology



Pyeongyang grand theatre, 1960



Pyeongyang grand theatre, 1960



Pyeongyang grand theatre
on its opening day, 1960



Pyeongyang grand theatre
after its roof replacement,
1962



Pyeongyang grand theatre after its roof replacement, 1962



Okryu-gwan, 1960



Grand people's study house, 1979-82



Grand people's culture palace, 1974





international friendship exhibition, myohyangsan, 1978







Residence

Chronotope Wall House











Small Residence

DARAK - DARAK



Architects	HTE SYSTEM LAB
Location	Garak-dong, Songpa
Building scope	6F
Site Area	200.30㎡
Total Area	396.68㎡





> 도로에서 본 건물 우측 전경

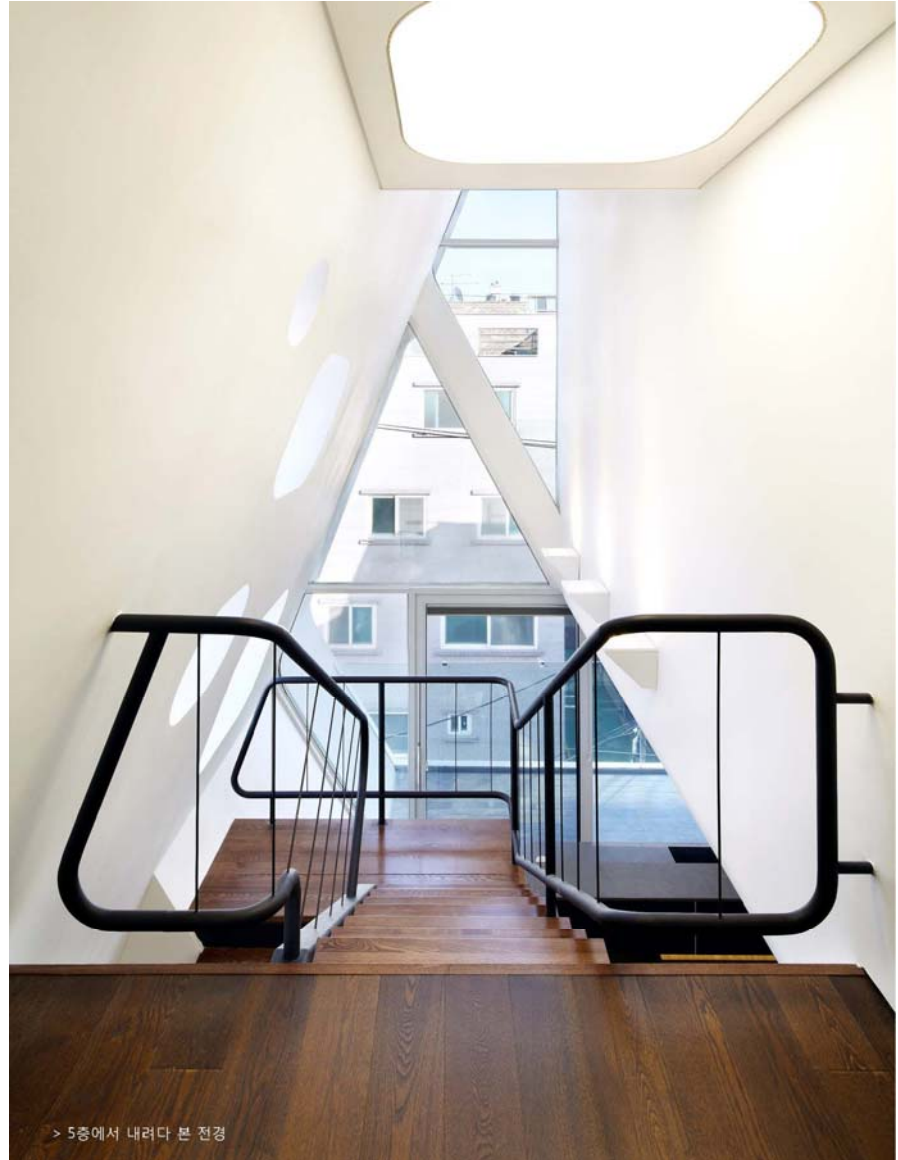


DARAK-DARAK
PORTFOLIO

COFFEE GRIDA

> 정면 사진





> 5층에서 내려다 본 전경

DARAK - DARAK



Butique Hotel

U Retreat



Architects	IDMM
Location	Hongcheon
Building scope	1F
Site Area	4,929㎡
Total Area	1,595㎡









Renovation Museum

SODA Museum





ROOF GALLERY



ROOF GALLERY



ROOF GALLERY



ROOFLESS GALLERY



CONCRETE GALLERY



Factory-Office

AMORE Pacific 2nd Business Center



Architects	Jungrim Architects
Location	Gajang-dong, Osan
Building scope	B1/4F
Site Area	37,425m²
Total Area	38,469m²

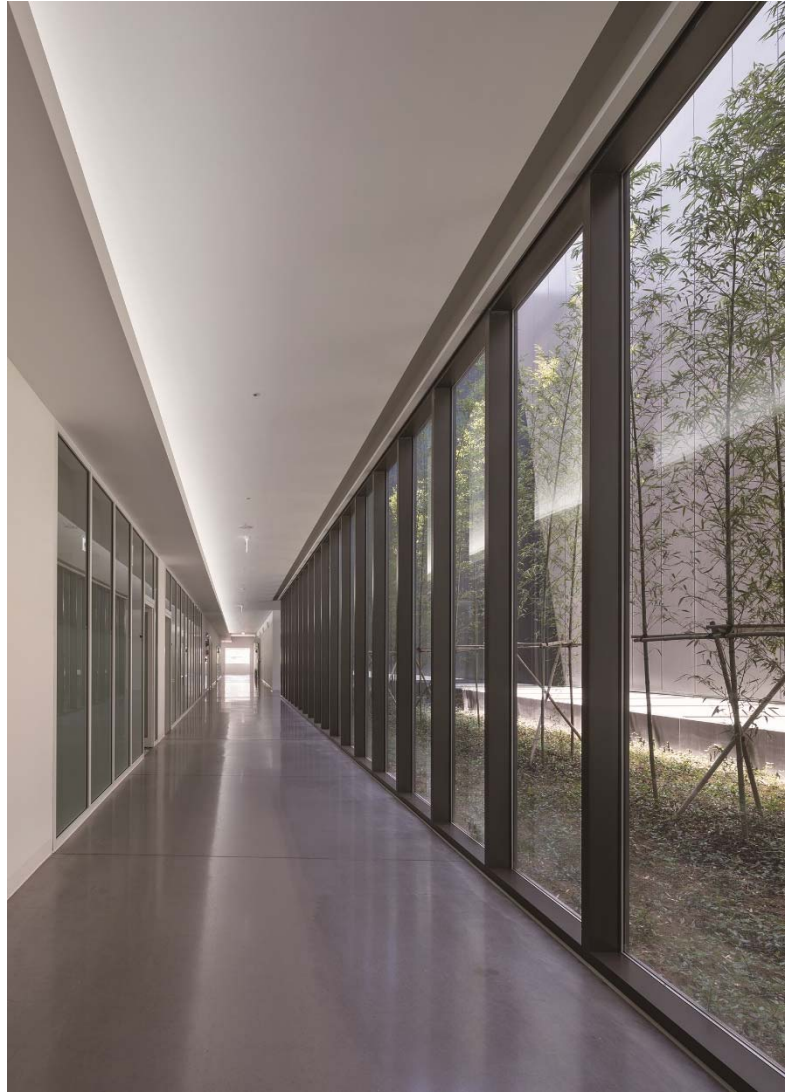












Retail Complex

Platform L

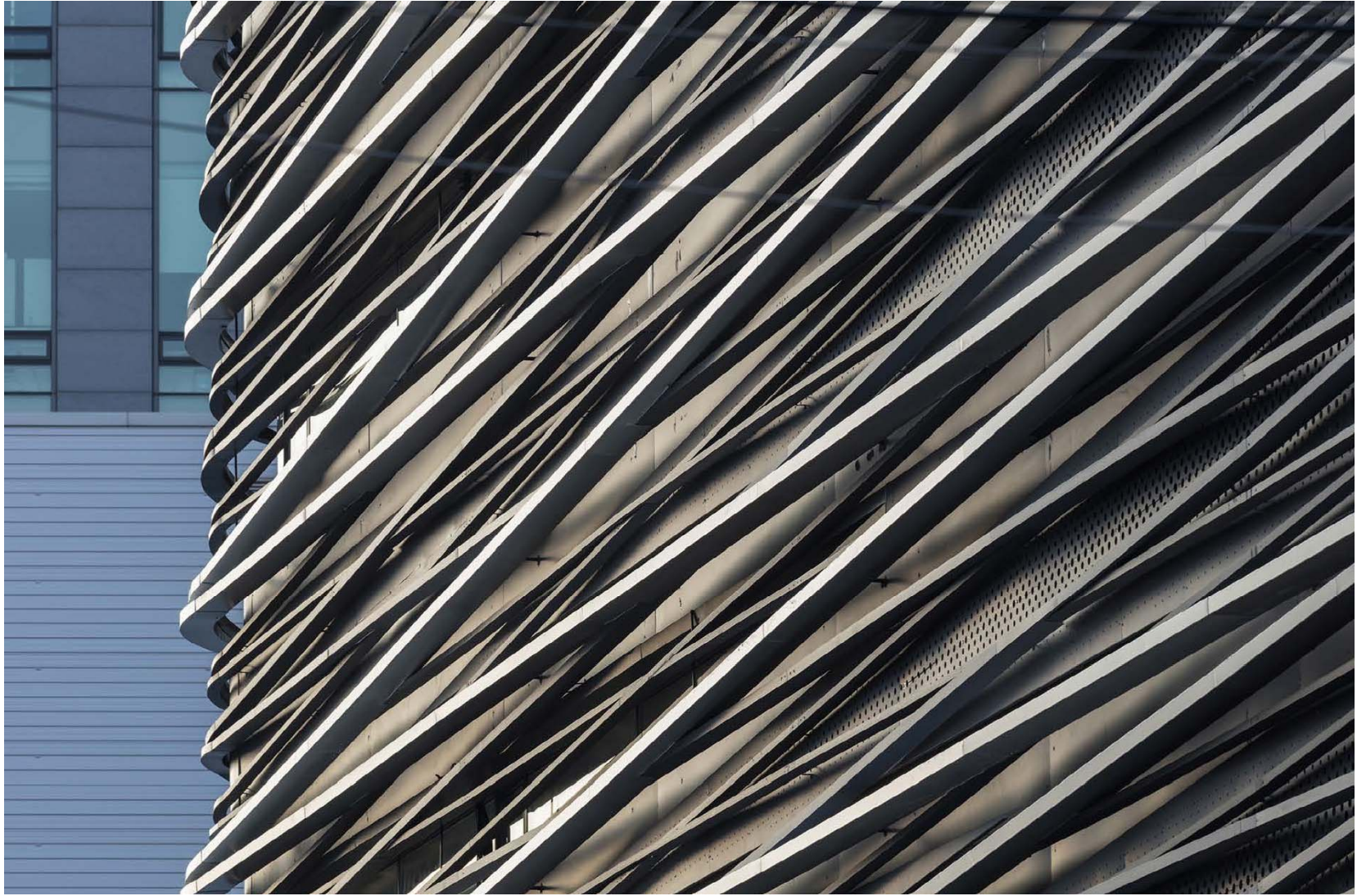


Architects	JOHO Architecture
Location	Gangnam, Seoul
Building scope	2F
Site Area	684.60㎡
Total Area	2,173.60㎡









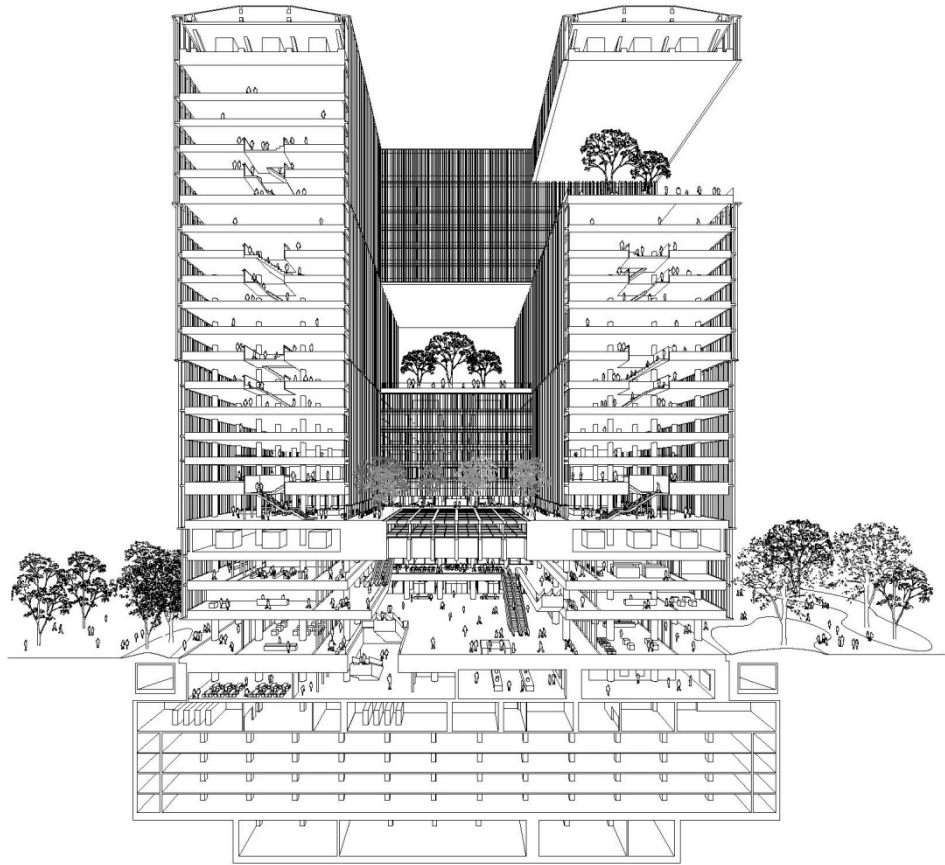


Urban Office

AMORE Pacific

Architects	David Chipperfield/HAEAHN
Location	Yongsan, Seoul
Building scope	B7/23F
Site Area	14,500㎡
Total Area	216,000㎡





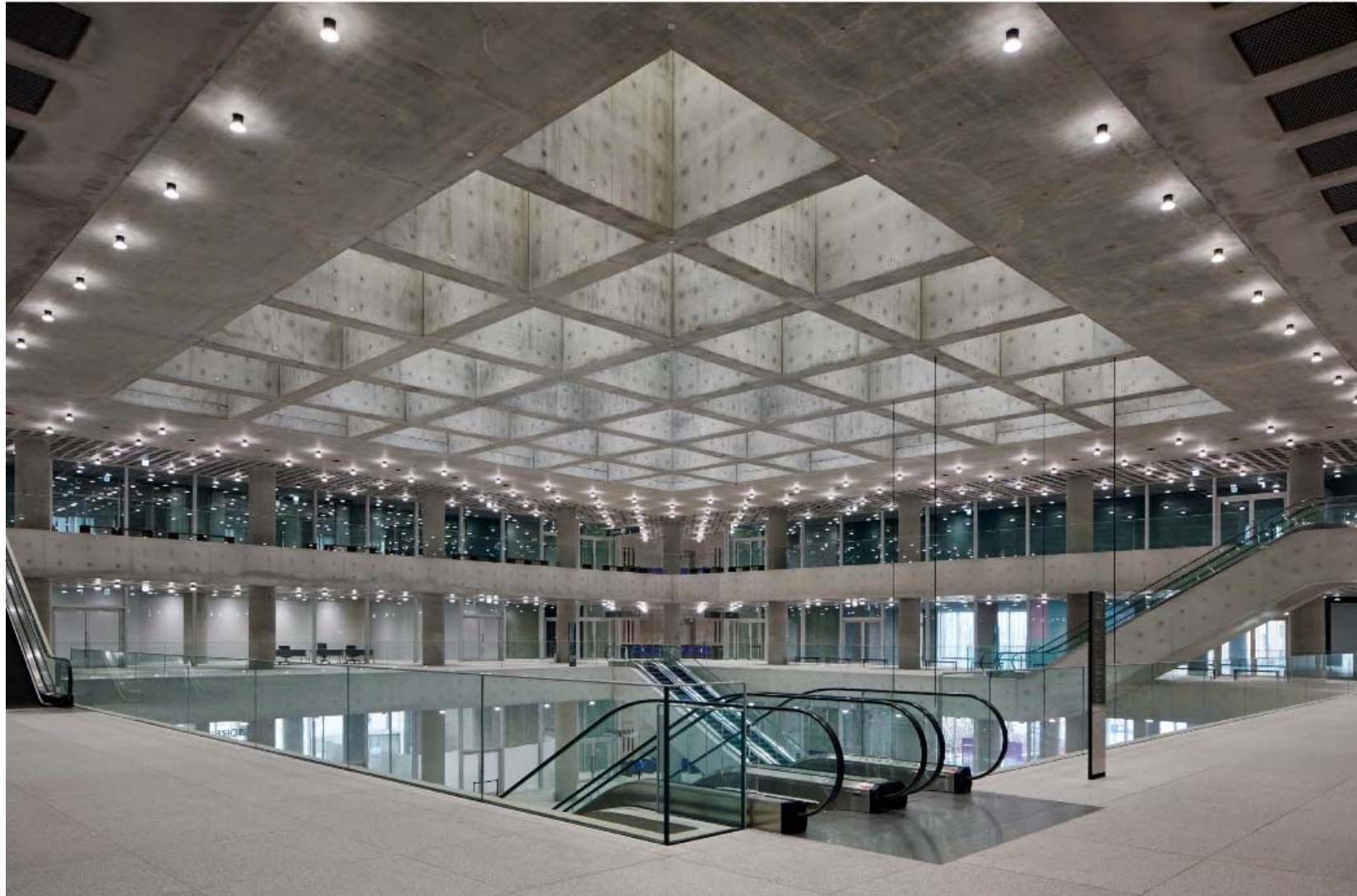




AMORE Pacific









Thank You

